

**INTENDED USE**

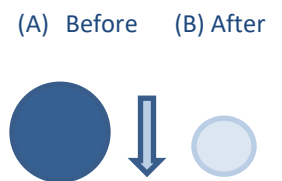
Richmond Dental and Medical's Soft BiteBlock™ is used to help protect the airway device (endotracheal tube or laryngeal mask airway), teeth, and tongue when patients emerge from general anesthesia. The Soft BiteBlock™ is provided non-sterile and is available in sizes: Small, Medium, and Large, depending upon the size of the patient and airway tube being used, please see sizes below.

**INSTRUCTIONS FOR USE**

- Wash your hands and use approved medical gloves
- Assess patient's oral capacity and condition to ensure it is compatible with size selection of the Soft BiteBlock™
- Unwrap Soft BiteBlock™ from packaging, following the "Tear Here" and perforations, and dispose of plastic wrapping
- Carefully, place the Soft BiteBlock™ between the back molars with the tongue medial
- Make sure the Soft BiteBlock™ protrudes outside the mouth and is visible
- Check to ensure the Soft BiteBlock™ is not pressed against the soft tissue, tonsils, or roof of the mouth to cause injury
- Recheck location of Soft BiteBlock™ frequently during use
- Extract Soft BiteBlock™ when no longer needed
- For single patient use only

**AVAILABLE SIZES**

Item #	(A) Soft BiteBlock™ Size (Before compression testing)	Packaging Color	Wet* (B) Compressed Dia. (mm)	Dry** (B) Compressed Dia. (mm)
260004	Large: 4" (101.6 mm) x 3/4" (19.05 mm)	Red	5	7
260003	Medium: 2.75" (69.85 mm) x 3/4" (19.05 mm)	Blue	5	7
260005	Small: 2.5" (63.5 mm) x 9/16" (14.29 mm)	Teal	3	4.3



\*Wet Compression testing was done on water saturated samples at 600 Newton's/135 pounds' force pressure

\*\*Dry Compression testing at 600 Newton's/135 pounds' force pressure

**WARNING AND PRECAUTIONS**

This device should only be used by CRNAs, Anesthesiology Technicians, Anesthesiologists, and other persons having adequate training and familiarity with intubation techniques.

When placing the Soft BiteBlock™ into the patient's mouth, care should be exercised to avoid placing fingers between the bite block and patient's teeth.

The Soft BiteBlock™ is not designed to be reprocessed or reused, and therefore cannot verify that reprocessing can clean and/or sterilize or maintain the structural integrity of the device to ensure patient safety. Plastic packaging is not autoclavable.

**PRODUCT DISPOSAL**

After use, this product may be a potential biohazard. Handle and dispose of in accordance with accepted medical practice and applicable local, state, and federal laws and regulations.



EMERGO EUROPE  
Prinsessegracht 20  
2514 AP The Hague  
The Netherlands

1100 Hawthorne Lane  
Charlotte, NC 28205 USA  
PHONE 1-855-841-0743

[www.RichmondDentalAndMedical.net](http://www.RichmondDentalAndMedical.net)  
Manufacturer: Richmond Dental and Medical